

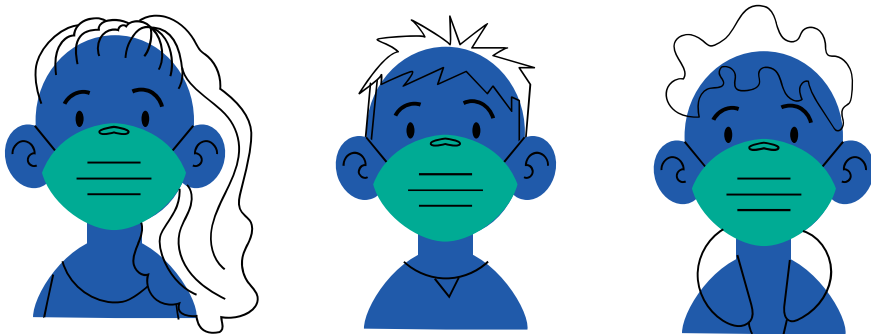
Proper Use of Personal Protective Equipment

- Universal Masking Recommendations
- Proper Use and Cleaning of Masks
- Proper Use of Gloves



Universal Masking

It is recommended that congregate living facilities serving vulnerable populations implement a universal masking policy that requires all staff to wear a mask when working and all clients to wear cloth masks.

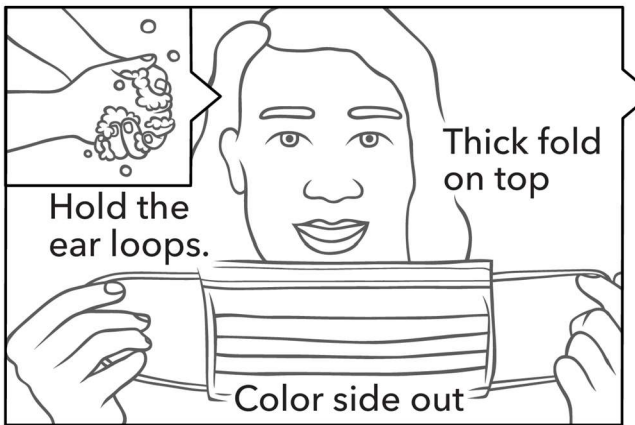


- Masks can prevent infection when caring for sick individuals and reduce the chance of spread from an infected person to another person.
- **Inappropriate use of masks can make you more likely to get infected.**
- Hand hygiene should be performed before putting on a mask, and after touching, adjusting, or removing a mask.
- Facemasks should be removed and discarded if soiled, damaged, or hard to breathe through.
- Cloth masks should be washed at least once a day. Typically when the wearer is finished with it for the day.

Proper Mask Use

How should I put my mask on?

Cook County Health



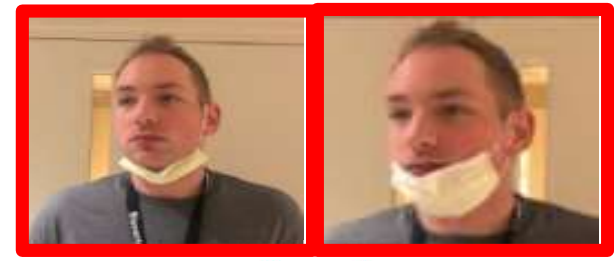
Put the loops around your ears.
Pull the bottom around your chin.
Bend the top to fit your nose.



Have you worn this mask before?

Wash your hands again after you put the mask on!

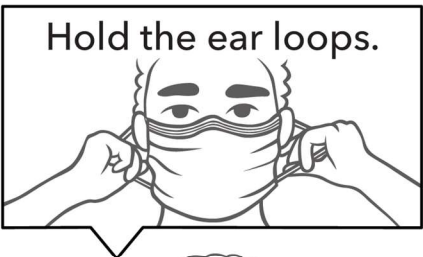
Masks can prevent infection and reduce the chance of spread from an infected person to another person. Inappropriate use of masks can make you more likely to get infected.



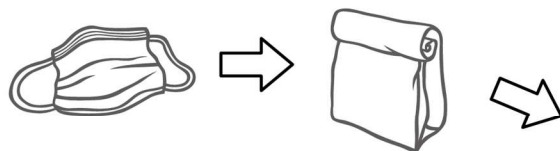
COVID-19

How should I take my mask off?

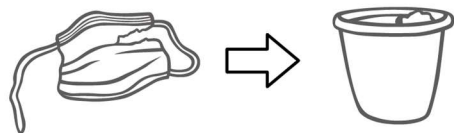
Hold the ear loops.



If you're going to reuse it, put it in a clean paper or plastic bag.



If you can see it is dirty or damaged, throw it away.



Don't touch your face.



COOK COUNTY HEALTH

✓ Store masks facing down when not in use



✓ Store ties away from the inside of masks when not in use





Globus

DON'T touch environmental surfaces – eg: door handles, a keyboard, a computer mouse, cell phone – with contaminated gloves

DON'T touch your face or adjust PPE with contaminated gloves

DON'T remove one glove, and then pull the other glove off by the fingertips

DON'T reuse disposable gloves once they have been removed

DO safely remove excess liquid beforehand

DO change gloves when heavily soiled or if torn

DO dispose of used gloves appropriately

DO wash hands after removing gloves

Presentation Access

Please access the full webinar for additional information

The webinar covers the following topics:

- examples of coordinated approaches between healthcare, social services, non-profit agencies, health departments, and local government agencies aimed at addressing the needs of the homeless population;
- screening, testing, monitoring, isolation, and quarantine protocols;
- infection control practices; and
- proper use of personal protective equipment (PPE).

The link includes access to handouts and a copy of the full presentation slides.

Link to webinar materials and handouts:

<https://iphionline.org/training/explore-webinars/>