



Hospitals and Communities  
Improving Health Across  
Chicago and Cook County

# Food Access and Food Security Workgroup Meeting

Thursday, April 23, 2020

# Agenda

- Presentation: Chicago Food Policy and Action Council: COVID-19 Rapid Response
- Food Procurement Discussion
- Wrap up and Next Steps

# Workgroup Leadership

## Leadership Team

- ACCESS Community Health Network
- Ann & Robert H. Lurie Children's Hospital\*
- Chicago Department of Public Health
- Chicago Food Policy Action Council
- Cook County Department of Public Health
- Cook County Health
- Greater Chicago Food Depository\*
- Proviso Partners for Health, Loyola University Health System
- Rush University Medical Center\*
- University of Illinois at Chicago
- Windy City Harvest, Chicago Botanic Garden

\*indicates workgroup co-chair

# COVID-19 Rapid Response

**Goal:** to support collaboration and collective advocacy in response to COVID-19's immense impact on the food system

Link to join a subgroup: <https://forms.gle/XnmhqzVLYi6kUcgH9>

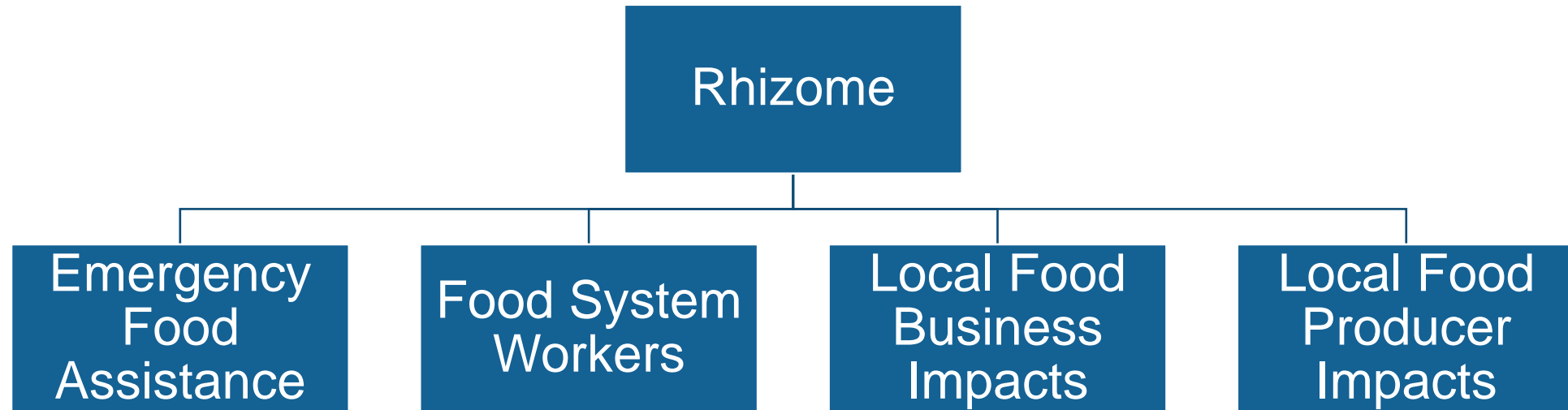
COVID-19 Food System Resources:  
[www.chicagofoodpolicy.com/covid19](http://www.chicagofoodpolicy.com/covid19)

Link to participate in the CFPAC Forum:  
<https://covid.chicagofoodpolicy.com/>

links will be posted in the chat



# COVID-19 Food Systems Rapid Response Structure



# COVID-19 Rapid Response: Subgroup Work



Link to COVID-19 Rapid Response Google Folder:

[https://drive.google.com/open?id=1gyH8\\_IROPWQE1uB3-r364pkiqtX0LQAL](https://drive.google.com/open?id=1gyH8_IROPWQE1uB3-r364pkiqtX0LQAL)

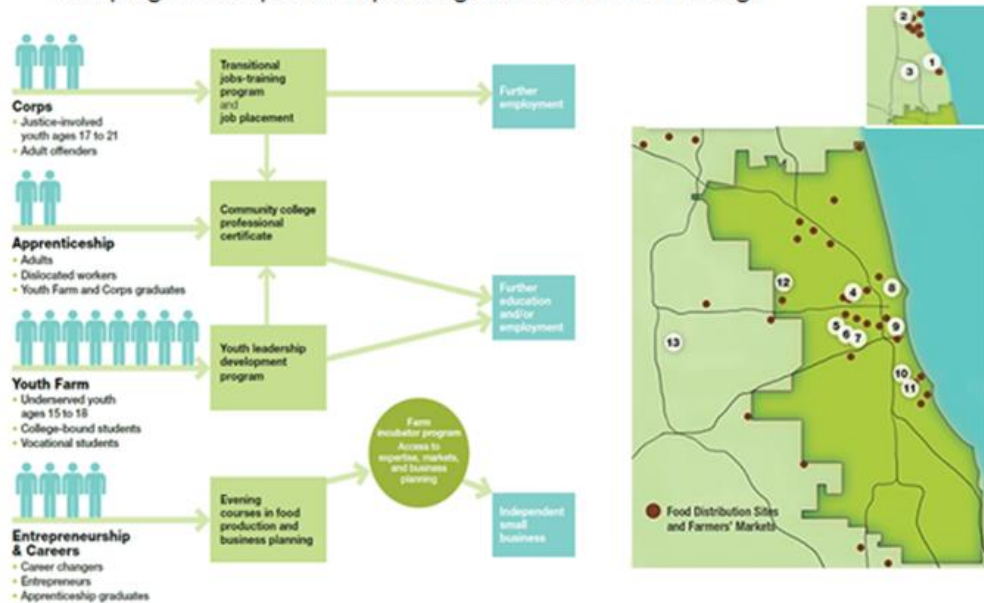
- Emergency Food Assistance
  - Connecting food assistance programs with surplus resources from various organizations.
- Food System Workers
  - Identifying advocacy areas for food system workers that working and those who have had hours reduced/lost their jobs.
- Local Food Business Impacts
  - Linking food businesses and producers and collecting survey information on longer term needs.
- Local Food Producer Impacts
  - Collaborating on innovative distribution models and sharing funding resources.

links will be posted in the chat

# VeggieRx Brief Overview

## Windy City Harvest

Four program components operating at 13 farm sites in Chicago



## Healthcare Partnerships

- North Lawndale
  - 2016
- PCC Community Wellness in Austin
  - 2019
- PP4H/Loyola University Medical Center
  - 2018 Elmwood Park
  - 2019 Maywood
    - Winter pilot program
  - 2020 Maywood

## Funding

- USDA FINI Grant

# VeggieRx Goals

## Food Access

- To eliminate or reduce barriers around fruit and vegetable consumption in North Lawndale and Maywood
- To build awareness about farmers' markets and increase SNAP use at markets

## Health Outcomes

- To increase vegetable consumption for SNAP enrolled individuals with diet related illnesses
- To improve health outcomes for patients at Lawndale Christian Health Center and Loyola Center for Health



# VeggieRx Components

1. Distribution
2. Nutrition Lesson and Cooking Demo
3. Low Cost Farm Stand





**DONATIONS  
NEEDED!**

[PROVISOPARTNERS.COM/DONATE](https://provisopartners.com/donate)

\$25 helps feed a family for a week.

Need food? Register at:  
[bit.ly/maywoodfood](https://bit.ly/maywoodfood) or  
call (708) 397-6012

**SUPPORT  
EMERGENCY  
FOOD RELIEF IN  
MAYWOOD**

Proviso Partners for Health and its partners are working together to ensure the Maywood community has access to nutritious and wholesome foods for the family.




CHICAGO BOTANIC GARDEN  
**Windy City Harvest**



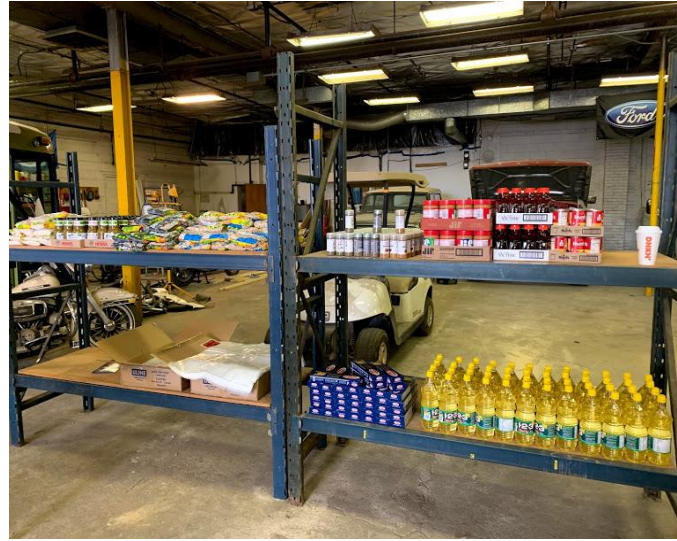
**PROVISO PARTNERS  
FOR HEALTH**  
*Sowing Seeds to Ignite Change*



CHICAGO BOTANIC GARDEN  
**Windy City Harvest**



**PROVISO PARTNERS  
FOR HEALTH**  
*Sowing Seeds to Ignite Change*



CHICAGO BOTANIC GARDEN  
**Windy City Harvest**



**PROVISO PARTNERS  
FOR HEALTH**  
*Sowing Seeds to Ignite Change*



**MAYWOOD  
VEGGIERX COVID-19  
FOOD DISTRIBUTION**

**FREE PRODUCE & PANTRY STAPLES  
SERVING MAYWOOD RESIDENTS  
FRIDAYS**

**REGISTER AT  
[BIT.LY/MAYWOODFOOD](https://bit.ly/maywoodfood)  
OR TEXT/CALL (708) 397-6012**

**A VOLUNTEER WILL FOLLOW-UP TO  
CONFIRM ELIGIBILITY AND DETAILS**

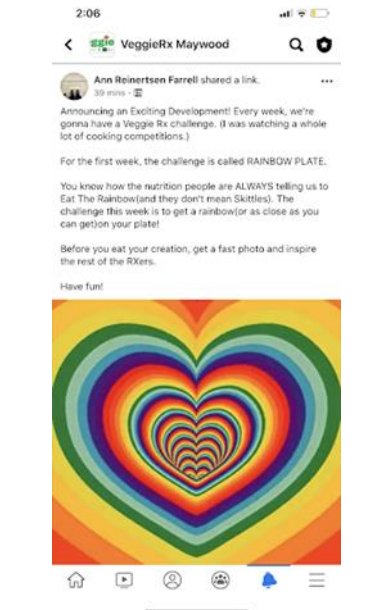
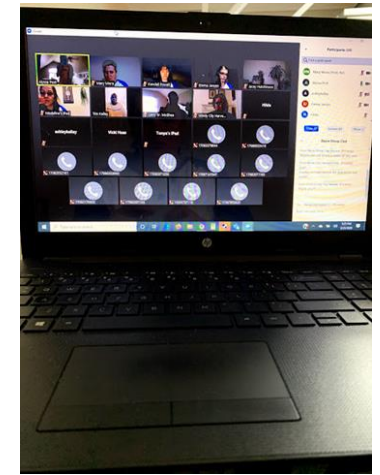
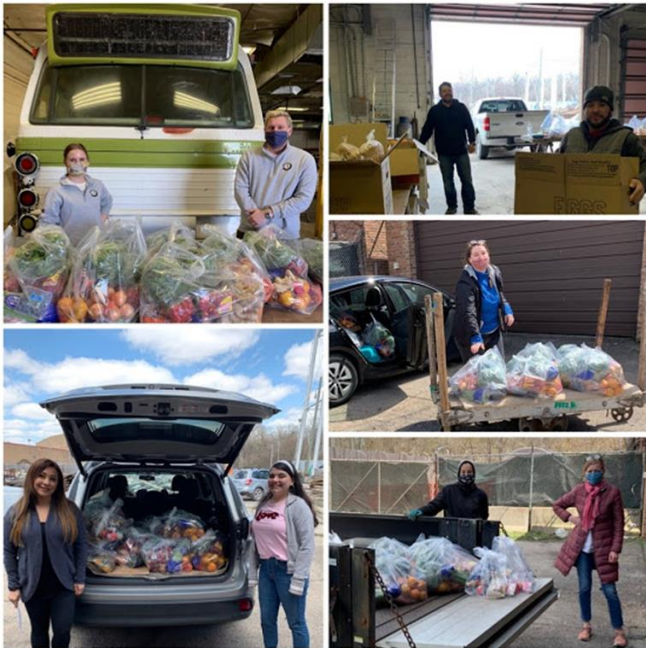


## Delivery Eligibility

Any VeggieRx participants OR Maywood resident who answers yes to any of the below:

- 60 years of age or older
- Is immunocompromised or someone in household is immunocompromised
- An essential worker or someone in household an essential worker (ie, healthcare, grocery store, delivery worker, first responder)

Distribution is assessed every week depending on availability, need, and CDC guidelines for social distancing/shelter in place.



CHICAGO BOTANIC GARDEN  
**Windy City Harvest**



**PROVISO PARTNERS  
 FOR HEALTH**  
*Sowing Seeds to Ignite Change*

# PP4H Expanded VeggieRx for Emergency Food Access

## Outreach to Maywood Residents

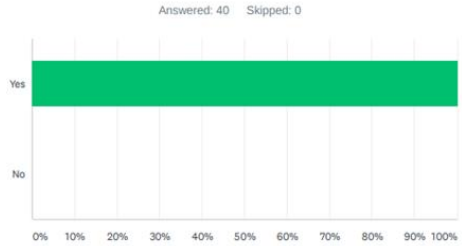
- Hotline and online registration ([bit.ly/maywoodfood](http://bit.ly/maywoodfood))
- Marketing: flyers, PP4H website and social media, and partner organizations
- VeggieRx Outreach Team - manages online and phone registrations, confirms eligibility and delivery dates.
- Post-delivery surveys to participants

## Community Impact to Date

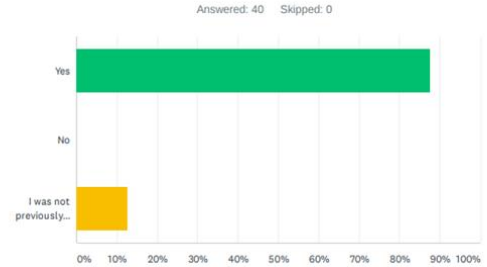
- To date, PP4H distributed 300 10-lb bags of high-quality food
- Served over 150 Maywood households - approximately 450 individuals.
- Home-bound seniors (over 50%), immunocompromised individuals, and residents who are essential workers are prioritized.

	3/20	3/27	4/3	4/10	4/17	4/24
Individual Deliveries	40	40	41	66	67	101 eligible
Group Deliveries	0	0	Phoenix Homes	Garden House	Garden House	Phoenix Homes MFM Clinic
<b>TOTALS</b>	<b>40</b>	<b>40</b>	<b>75</b>	<b>150</b>	<b>155</b>	<b>200</b>
Components	Produce	Produce Staples Cielito Lindo	Produce Staples Bread from Puebla Panaderia	Produce Staples Turano	Produce Staples Cielito Lindo and Turano	Produce Staples
Mode	Delivery	Delivery	Delivery and Pick Up	Delivery	Delivery	Delivery

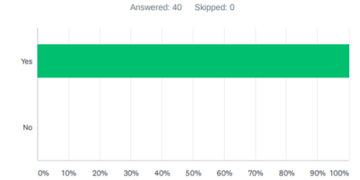
Q1 Overall, has VeggieRx supported your ability to feed yourself or your family during the COVID-19 pandemic?



Q2 Has VeggieRx relieved any stress you might have experienced in trying to feed yourself or your family during the COVID-19 pandemic?



Q3 Has VeggieRx helped you reduce the number of trips needed to get groceries each week during the COVID-19 pandemic?



ANSWER CHOICES	RESPONSES
Yes	100.00% 40
No	0.00% 0
<b>TOTAL</b>	<b>40</b>



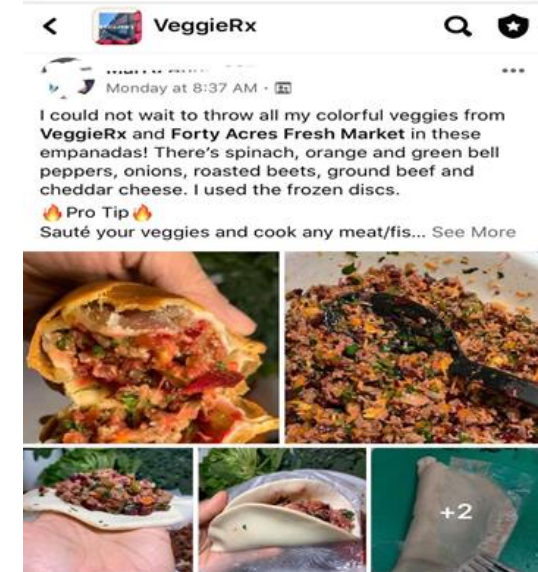
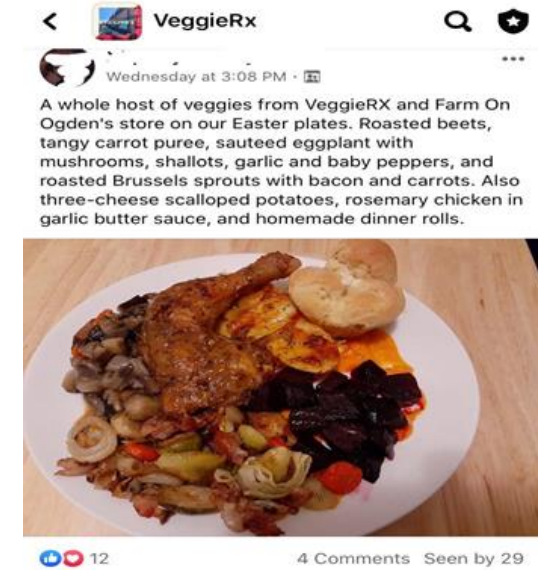
# North Lawndale/PCC VeggieRx

- Partnered with Lawndale Christian Health Center and PCC wellness center to deliver VeggieRx bags to patients.
- Offer pickups and deliveries of VeggieRx bags of produce. Wednesday's between 10am – 2pm at the Farm on Ogden
- 3 distributions so far to SNAP recipients and PCC/Lawndale patients.
- Distributed 270 bags
- Created Facebook group to keep participants up to date on VeggieRx announcements and what they will be getting weekly in the bag.



# WCH Highlights

- Increasing sanitation for all deliveries and pickup; operating with limited staff on site to be able to maintain social distancing
- VeggieRx is helping to creating a reliable market for WCH Incubator farmers
- Will be moving PCC Austin's group medical visits to telehealth with outreach from care coordinators, nurse, medical provider and behavioral health
  - Starting with individual outreach
  - Creating tiers for patients based on need to determine frequency of contact



# Distribution by Week

	Total Bags Distributed	# of pickups	# of deliveries
Week 1	74	33	41
Week 2	98	37	61
Week 3	98	29	69



Donations: 90 bags to, staff, neighbors, community gardeners, graduates/participants

# Thanks to all of our partners and sponsors!



# Food Procurement Discussion

*How has COVID-19 brought to light the opportunities for hospitals and other large institutions to support the local food system through procurement/purchasing or other strategies?*

# Alliance for Health Equity Contacts

**Jess Lynch, Program Director**

[Jessica.Lynch@iphionline.org](mailto:Jessica.Lynch@iphionline.org)

312-786-5358

**Leah Barth, Program Manager**

[Leah.Barth@iphionline.org](mailto:Leah.Barth@iphionline.org)

312-786-5358

**Andi Goodall, Program Associate**

[Andi.Goodall@iphionline.org](mailto:Andi.Goodall@iphionline.org)

312-786-5358

For more information on the Alliance for Health Equity,  
check out our website at [allhealthequity.org](http://allhealthequity.org)