



GAS AND ELECTRIC

We help you pay for your gas & electric bills through the LIHEAP (Low-Income Home Energy Assistance Program). See below to learn how to apply today.



WHAT IS IT?

For many households, utility bills can place stress on a family's budget. In some cases, the household may be forced to make difficult decisions, such as sacrificing certain necessities in order to pay their energy bills. LIHEAP hopes to take some of that stress away and keep utilities running.



HOW DOES IT HELP? YOU RECIEVE

ONE TIME BENEFIT provided to eligible households towards your gas and electric bill.



DO I QUALIFY?

To qualify you must also meet the NEW, EXPANDED income guidelines.

Income Guidelines								
Household/Family Size	1	2	3	4	5	6	7	8
30 Day Gross Income	\$2,127	\$2,873	\$3,620	\$4,367	\$5,113	\$5,860	\$6,607	7,353



WHAT DO I NEED TO DO? APPLY TODAY!

You can apply from the safety of your home. Find out how at www.CEDAorg.net/Gas-And-Light



FURNACE REPAIR AND REPLACEMENT

This program provides and restores heat to your home by repairing or Replacing heating systems.



WHAT IS IT?

If your household is LIHEAP eligible and your heating system isn't working or is in need of repair we may be able to assist you.



HOW DOES IT HELP? YOU RECIEVE

REPAIR OR REPLACEMENT of furnaces and boilers



DO I QUALIFY?

To qualify you must be the homeowner living in the property. You must also meet the **NEW, EXPANDED** income guidelines.

INCOME GUIDELINES								
Size of Household	1	2	3	4	5	6	7	8
30 Day Gross Income	\$2,127	\$2,873	\$3,620	\$4,367	\$5,113	\$5,860	\$6,607	\$7,353



WHAT DO I NEED TO DO? APPLY TODAY!

You must be eligible for LIHEAP to receive these benefits. You can apply for the furnace program and LIHEAP on our website here:

www.CEDAorg.net/Furnace-Repair





FAMILY SUPPORT AND COMMUNITY ENGAGEMENT (FsACE)

If you live in suburban Cook County, this program can help you stabilize over 90 days through a case management program.



WHAT IS IT?

FsACE is a "case management" program that looks at your needs and builds you a path toward self-sufficiency.



HOW DOES IT HELP? YOU RECEIVE

DENTAL AND VISION services, like dental exams, eye exams, and glasses
TRANSPORTATION HELP with car repairs, bus cards, and gas cards
SCHOLARSHIPS for post-secondary education available starting 4/23/2021
JOB PREP & COUNSELING including vocational training and job placement
FRESH PRODUCE and nutrition education
ADDITIONAL FUNDS for your unique needs, like beds, replacement IDs, GED fees, and beyond.



DO I QUALIFY?

To qualify you must live in suburban Cook County and meet the **NEW, EXPANDED** income guidelines.

GROSS INCOME GUIDELINES								
Family Size	1	2	3	4	5	6	7	8
30-Day Income	\$2,147	\$2,903	\$3,660	\$4,417	\$5,173	\$5,930	\$6,687	\$7,443
Annual Income	\$25,760	\$34,840	\$43,920	\$53,000	\$62,080	\$71,160	\$80,240	\$89,320



WHAT DO I NEED TO DO? PRE-APPLY TODAY!

Call (312) 795-8948 or head to our website: www.CEDAorg.net/FsACE-Help. You'll need these documents; DL or State ID, Consular Identification Card, SS Card for all household members, previous 30 days income. We'll let you know if other documents are needed.



CEDAorg.net



@CEDAgogreen



Text "CEDA" to 313131

QUESTIONS?

Call (312) 795-8948



FsACE COVID-19 PROGRAM

Through the CARES Act, we have new and expanded services for household impacted by the COVID-19 crisis.



WHAT IS IT?

This new program is designed to support households who have experienced layoffs, a death in the family, reduced wages, children being at home, medical expenses, additional food expenses, and more.



HOW DOES IT HELP? YOU RECEIVE

PAYMENTS on your rent, mortgage, water bill, and phone bill
ONLINE LEARNING essentials for students K-8 including laptops
MEDICAL COSTS for supplies and prescriptions
FOOD BOX DELIVERIES for seniors and the homebound
TRANSPORTATION costs, like registration fees



DO I QUALIFY?

You qualify if you or a member of your household **are an essential employee** or experienced:

A JOB LOSS, reduction in hours, or increase in household expense
ILLNESS related to COVID
THE DEATH of a household member related to COVID

To qualify you must live in suburban Cook County and meet the **NEW, EXPANDED** income guidelines.

GROSS INCOME GUIDELINES								
Family Size	1	2	3	4	5	6	7	8
30-Day Income	\$2,147	\$2,903	\$3,660	\$4,417	\$5,173	\$5,930	\$6,687	\$7,443
Annual Income	\$25,760	\$34,840	\$43,920	\$53,000	\$62,080	\$71,160	\$80,240	\$89,320



WHAT DO I NEED TO DO? PRE-APPLY TODAY!

Call (312) 795-8948 or head to our website: www.CEDAorg.net/FsACE-Help.
 You'll need these documents; DL or State ID, Consular Identification Card, SS Card for all household members, previous 30 days income. We'll let you know if other documents are needed.



CEDAorg.net



@CEDAgogreen



Text "CEDA" to 313131

QUESTIONS?

Call (312) 795-8948



HOME WEATHERIZATION

This program helps customers save energy, as well as keep their homes warmer in winter and cooler in summer.



WHAT IS IT?

Our program makes homes safer and more comfortable. Weatherization improvements also make buildings more energy efficient, lowering energy bills in the long run.



HOW DOES IT HELP? YOU MAY RECEIVE

SEALED drafty areas

INSULATED attics, walls, basements, and crawl spaces

REPAIRED OR REPLACED heating systems

ENHANCED indoor air quality and ventilation



DO I QUALIFY?

To qualify you must meet the income guidelines. If a home was weatherized on or after 9/30/1994, follow the 150% guidelines. Otherwise, follow the 200% guidelines.

INCOME GUIDELINES									
Family Size		1	2	3	4	5	6	7	8
Annual Income	150%	\$19,140	\$25,860	\$32,580	\$39,300	\$46,020	\$52,740	\$59,460	\$66,180
	200%	\$25,520	\$34,480	\$43,440	\$52,400	\$61,360	\$70,320	\$79,280	\$88,240

Our program works on single-family and multi-family homes. The home needs to meet minimum structural requirements.



WHAT DO I NEED TO DO? APPLY TODAY!

You can apply for the weatherization program from the safety of your home by calling a CEDA partner intake site. Locate the site closest to you at www.CEDAorg.net/Weatherization

Cook County
**COVID-19
RECOVERY**
Emergency
Rental Assistance



Do you live in Suburban Cook County and need help paying rent and utilities due to COVID-19?

The Cook County Emergency Rental Assistance program pays up to 12 months of missed rent and utilities payments and up to 3 months of future rent payments.

HOW CAN I APPLY?

Applications open March 11, 2021, and will be accepted until April 2, 2021. Start the application process at cookcountyil.gov/recovery.

How do I know if I'm eligible? To be eligible, renters must:

- Live in suburban Cook County and rent their home (Landlords may apply on behalf of tenants)
- Lack access to other support (e.g., don't live in public housing or receive rental assistance from other programs)
- Have proof of financial hardship due to the COVID-19 pandemic
- Have a household annual income at or below these requirements:

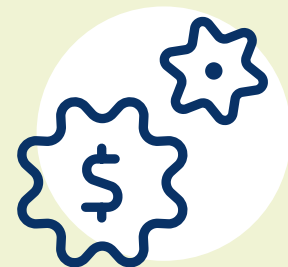
Household size	1	2	3	4	5	6	7	8
Income	\$51,000	\$58,250	\$65,550	\$72,800	\$78,650	\$84,450	\$90,300	\$96,100

What documents do I need to apply? For the initial application, renters need:

- Photo ID
- Social Security card (if available)
- Verification of income for 2020 (e.g., recent paystubs or tax returns)
- Documentation of COVID-19 financial hardship (e.g., unemployment claims or proof of income decrease)
- Latest utility bill (if applying for utility assistance)

To apply and learn more:

- Visit cookcountyil.gov/recovery
- Get text alerts by texting: AlertCook to 888-777



For assistance with your application and language translation services, please contact the Cook County Emergency Rental Assistance Program helpline at 877-426-6515.

If you live in the City of Chicago and need rental assistance, visit chi.gov/housinghelp for more information



The Special Supplemental Nutrition Program for Women, Infants and Children (WIC), funded by the United States Department of Agriculture (USDA), is a supplemental nutrition program focused on healthy eating for moms, babies and kids.

FOOD. EDUCATION. SUPPORT. YOU GOT THIS.

We're here to support your family with:



Healthy Food



Breastfeeding Support



Nutrition Education



Referrals

ALL CAREGIVERS ARE WELCOME.

If you're pregnant, a caregiver, or a mom with child under 5, you can get support for you and your family.

We offer support for:

- ✓ Moms
- ✓ Dads
- ✓ Pregnant Women
- ✓ Grandparents
- ✓ Step-parents
- ✓ Guardians
- ✓ Foster parents

Those that are part of foster care, medical assistance or SNAP are eligible. Caregivers with low to medium income are also eligible.

**WIC Income Eligibility Guidelines (Gross Income)
Effective July 1, 2020 to June 30, 2021**

Family Size	1 Person	2 People	3 People	4 People	5 People	6 People
Annual	\$23,606	\$31,894	\$40,182	\$48,470	\$56,758	\$65,046
Monthly	\$1,968	\$2,658	\$3,349	\$4,040	\$4,730	\$5,421
Twice-weekly	\$984	\$1,329	\$1,675	\$2,020	\$2,365	\$2,711
Bi- Weekly	\$908	\$1,227	\$1,546	\$1,865	\$2,183	\$2,502
Weekly	\$454	\$614	\$773	\$933	\$1,092	\$1,251

Contact your local WIC office for more details.



YOU'RE BUSY. WE KNOW. 20 CEDA WIC LOCATIONS IN COOK COUNTY.

ALBANY PARK

2754-58 W. Lawrence Ave.
Chicago, IL 60625
Phone: (773) 878-0578

CHICAGO HEIGHTS

233 W. Joe Orr Rd.
Chicago Heights, IL 60411
Phone: (708) 754-2788

HARVEY

53 E. 154th St.
Harvey, IL 60426
Phone: (708) 339-3614

MAYWOOD

411 W. Madison St.
Maywood, IL 60153
Phone: (708) 236-5024

OAK PARK

6026 W. Roosevelt Rd.
Oak Park, IL 60304
Phone: (708) 445-3314

AUSTIN

5425 W. Lake St.
(2nd floor—PCC Bldg)
Chicago, IL 60644
Phone: (773) 413-1917

DES PLAINES

400 O'Connor Dr.
Des Plaines, IL 60016
Phone: (847) 294-1802

HANOVER PARK

1515 E. Lake Street
Hanover Park, IL 60133
Phone: (630) 289-3800

MORTON GROVE

6421 Dempster St.
Morton Grove, IL 60053
Phone: (224) 534-7433

ROLLING MEADOWS

Eastpark Apartments Office
Building, 1st Floor
2272 Algonquin Pkwy.
Rolling Meadows, IL 60008
Phone: (847) 670-6980

BLOOM-RICH

1203 W. End Ave.
Chicago Heights, IL 60411
Phone: (708) 754-4576

DIVERSEY

4622 W. Diversey Ave.
Chicago, IL 60639
Phone: (773) 545-7159

HOWARD

1516 W. Howard St.
Chicago, IL 60626
Phone: (773) 338-7334

MT. PROSPECT

1300 W. Northwest Hwy.
Mt. Prospect, IL 60056
Phone: (224) 324-3848

SUMMIT

5818 S. Archer Rd
Summit, IL 60501
Phone: (708) 458-0012

BLUE ISLAND

12940 S. Western Ave.
(entrance off High Street)
Blue Island, IL 60406
Phone: (708) 371-5728

IRVING PARK

3948 N. Lowell Ave.
Chicago, IL 60641
Phone: (773) 685-1507

OAK LAWN

5535 W. 87th St.
Oak Lawn, IL 60453
Phone: (708) 423-1131

WHEELING

300 McHenry Rd.
Wheeling, IL 60090
Phone: (847) 243-9270

CONTACT US!



(855)WIC-CEDA

(855)942-2332

www.CEDAorg.net/Get-WIC

wic@cedaorg.net

In accordance with Federal civil rights law and U.S. Department of Agriculture (USDA) civil rights regulations and policies, the USDA, its Agencies, offices, and employees, and institutions participating in or administering USDA programs are prohibited from discriminating based on race, color, national origin, sex, disability, age, or reprisal or retaliation for prior civil rights activity in any program or activity conducted or funded by USDA.

Persons with disabilities who require alternative means of communication for program information (e.g. Braille, large print, audiotape, American Sign Language, etc.), should contact the Agency (State or local) where they applied for benefits. Individuals who are deaf, hard of hearing or have speech disabilities may contact USDA through the Federal Relay Service at (800) 877-8339. Additionally, program information may be made available in languages other than English.

To file a program complaint of discrimination, complete the USDA Program Discrimination Complaint Form, (AD-3027) found online at: http://www.ascr.usda.gov/complaint_filing_cust.html, and at any USDA office, or write a letter addressed to USDA and provide in the letter all of the information requested in the form. To request a copy of the complaint form, call (866) 632-9992. Submit your completed form or letter to USDA by:

(1) mail: U.S. Department of Agriculture, Office of the Assistant Secretary for Civil Rights, 1400 Independence Avenue, SW, Washington, D.C. 20250-9410;

(2) fax: (202) 690-7442; or

(3) email: program.intake@usda.gov.

This institution is an equal opportunity provider.